



## 使用 *TOPSwitch*<sup>®</sup>-HX 及 *TinySwitch*<sup>®</sup>-PK 设计电源

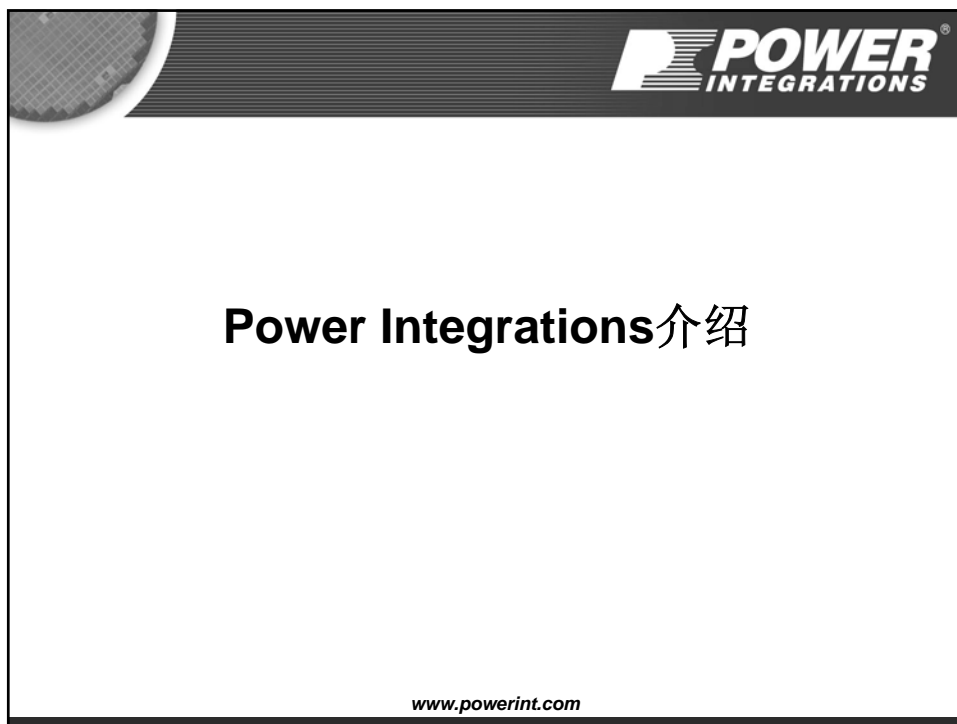
[www.powerint.com](http://www.powerint.com)

### 研讨会议程

- Power Integrations 公司简介
- *TOPSwitch*-HX 简介
  - 特性、工作方式和性能
  - 使用 *TOPSwitch*-HX 进行设计
  - 设计范例及技巧提示
- PI Expert 实际演示
  - 使用 *PI Xls*、*PI Expert*<sup>™</sup> 和 *PI Transformer Designer* 完成一个设计
  - 通过调整变压器设计来解决常见的电源问题
- *TinySwitch*-PK 简介
  - 特性、工作方式和性能
  - 使用 *TinySwitch*-PK 进行设计
  - 设计范例及技巧提示
- PI 器件快速设计校验



幻灯片# 2



### 公司介绍

- 高压单片功率转换IC的领先供应商
- 已为市场提供超过20亿片的芯片
- 革新性的产品
- 出色的质量和交付能力
- 节能领域的先驱 (EcoSmart®)



## 全球应用支持



- 配置齐全的应用实验室（如红点所示）
- 在全球范围内拥有55名以上的应用工程师



幻灯片# 5

## 设计范例网页有150多个设计方案

PI FACTS

- Application Notes
- Design Examples
- Reference Designs (DATA)
- Design Software
- Technical Support
- IP Licensing
- Design Consultants
- Component Suppliers
- Design Seminars
- Conferences/Papers

Technical Support Search

PI FACTS

EcoSmart®  
Energy Efficient Solutions

### Design Examples

**Design Example Reports (DER)**  
Design Example Reports contain a power supply design specification, schematic, bill of materials, transformer documentation, and pcb layout. This design has been built and bench-tested to provide performance data and typical operation characteristics.





**Design Ideas (DI)**  
Design Ideas are concise two-page documents describing a design for a specific application. Key design points are highlighted.

**Engineering Prototype Reports (EPR)**  
Engineering Prototype Reports contain a power supply reference design specification, schematic, bill of materials, transformer documentation, and pcb layout. Performance data and typical operating characteristics are included. The design has been put into production for use in our [DICE](#).

The documents are organized by application, starting from the most recent document. To sort by a different column, position your cursor over an underlined column heading and click once with your left mouse button.

✓ **CEC "Green Design"**. Sample designs that can be used to meet the efficiency requirements set by the California Energy Commission (CEC) and **ENERGY STAR**®, as well as many other regulations worldwide. For information on global energy efficiency standards and EcoSmart® solutions, visit our [Green Room](#).

Quick Jump:

Application	Output Voltage	Output Power (W)	Schematic	Topology	Desc.	DAK	Gerber
<b>Appliance:</b> Audio Amplifier Charger/Adapter Cordless Phone DC-DC Converter/Communications DC-DC Converter/PoE DC-DC Converter/VoIP Phone DC-DC Power Supply Digital Video Recorder DVD Recorder/Recorder	5 V/ 24 V	7.3	 <a href="#">click to enlarge</a>	Flyback	<a href="#">DER_110</a>	-	-
<b>Appliance:</b> General Purpose High Speed Modem Industrial Laptop Adapter LCD Monitor	6V	10	 <a href="#">click to enlarge</a>	Flyback	<a href="#">DER_107</a>	-	-
<b>Appliance:</b> LCD TV Standby LED Motor Control Network Interface	24 V	15	 <a href="#">click to enlarge</a>	Flyback	<a href="#">DER_106</a>	-	-
<b>Appliances:</b> <a href="#">TOP2437-GX</a> TOP243Y TOP2400 VAC	14 V/ 5 V	19.3	 <a href="#">click to enlarge</a>	Flyback	<a href="#">DER_105</a>	-	-

<http://www.powerint.com/appcircuits.htm>



幻灯片# 6

### 参数搜索功能简化了设计查找过程

[www.powerint.com/psearch](http://www.powerint.com/psearch)



幻灯片# 7

### 提供18个以上可工作的参考设计

DESIGN ACCELERATOR KIT	BOARD NUMBER	PI DEVICE	INPUT VOL TAGE	OUTPUT VOL TAGE	OUTPUT POWER	SAMPLES	DATA SHEETS	ENGINEERING REPORT	APPLICATION NOTE
DAK-93 PeakSwitch ✓Eco	EP-93	PK9609Y	90-265 VAC	30 V	32 W	PK9604PY PK9605PPY PK9606PZY	DS-9303-906	EPR-93	AN-41
DAK-91 TinySwitch-II ✓Eco	EP-91	TNY278P	85-265 VAC	12 V	12 W	TNY278P TNY280P	TNY274-280	EPR-91	-
DAK-88 LinkSwitch-XT ✓Eco	EP-89	LNK362P	85-265 VAC	6.2 V	2 W	LNK362P0 LNK362P10 LNK364P0	LNK362-364	EPR-89	AN-49

[www.powerint.com/dak.htm](http://www.powerint.com/dak.htm)



幻灯片# 8

## 全球技术支持



### Technical Support

- PI FACTS
- Application Notes
- Design Examples
- Reference Designs (DRMs)
- Design Software
- Technical Support
- IP Licensing
- Design Consultants
- Component Suppliers
- Design Seminars
- Conferences/Papers



#### By Email

**Ask a PI Engineer:**  
Submit your technical question using our online [Technical Support Request](#) form.

**PI Expert Technical Support:**  
If you have questions about using PI Expert, fill out the [PI Expert Problem Report Form](#).

Note: For sales or purchasing questions, please contact your local Power Integrations [sales office](#) or [distributor](#) for help.

#### By Phone

**Direct Design Support:**  
Call dedicated applications hotlines worldwide.

##### For India and Southeast Asia

**Phone:**  
1-800-425-9660  
A local call from within India when using the BSNL/MTNL service provider

000-2237-2252  
From outside Bangalore but within India  
+91-80-2237-2252  
From anywhere in the world outside India

**Contact person:**  
Himmat Parmar, Applications Hotline Engineer, PI India  
Email: [himmat.parmar@powerint.com](mailto:himmat.parmar@powerint.com)  
Skype ID: [pi\\_hotline](#)  
Support office location: Bangalore, India

##### For China

**中国:**  
00-755-8379-3243  
广东、福建、香港、台湾  
00-21-6215-5548  
上海、江苏、浙江、湖北、江西、安徽、河南、山西、山东、河北、北京、辽宁、吉林、黑龙江、内蒙古、天津  
00-20-8676-2012  
四川、重庆、云南、贵州、广西、湖南、陕西、宁夏、甘肃、新疆、青海

[www.powerint.com/techsupport.htm](http://www.powerint.com/techsupport.htm)

