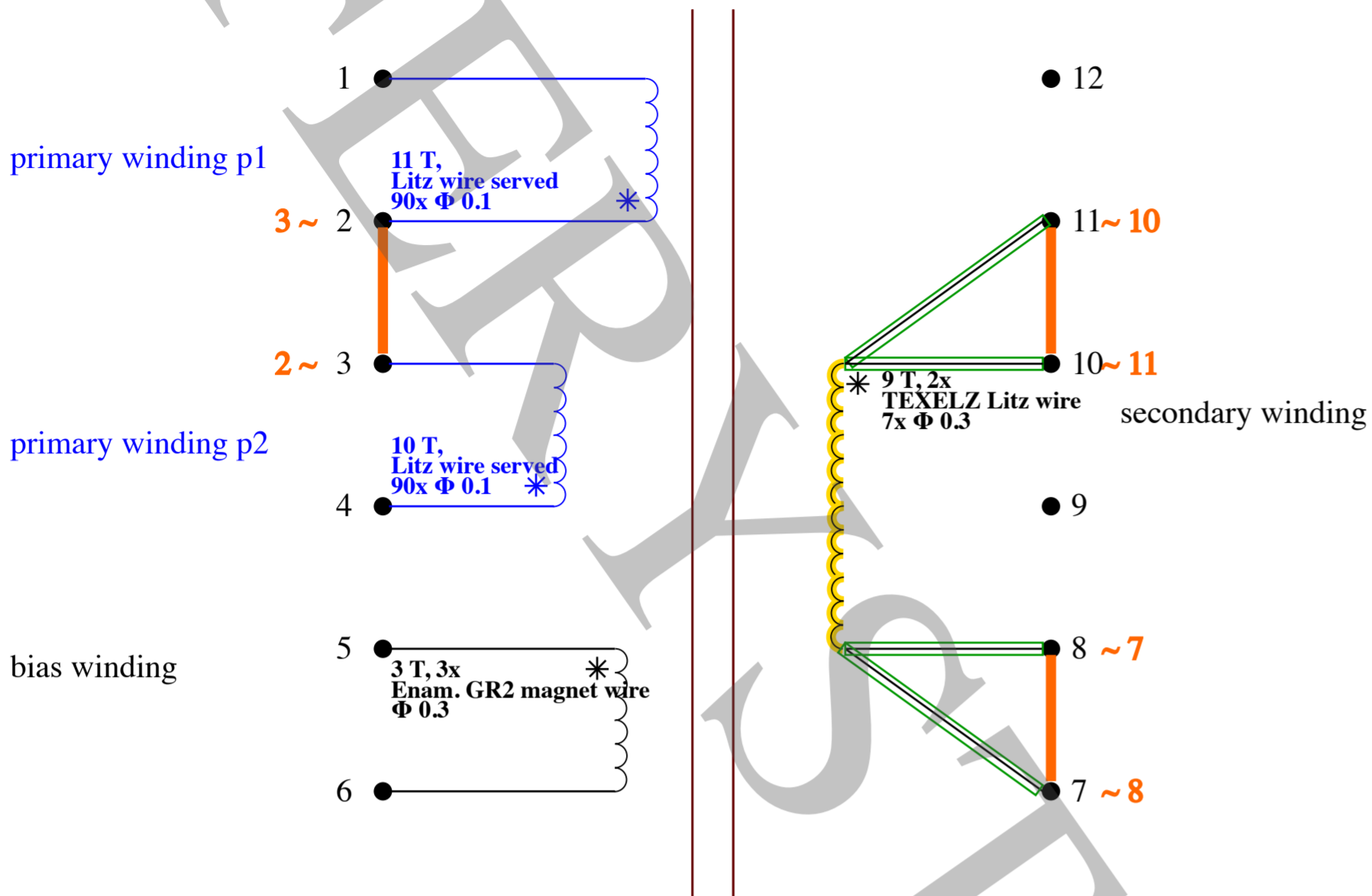


SMPS input voltage 195-265VAC
Device/controller TOP261YN
Standard brak

Inductance primary: 268.13 μ H

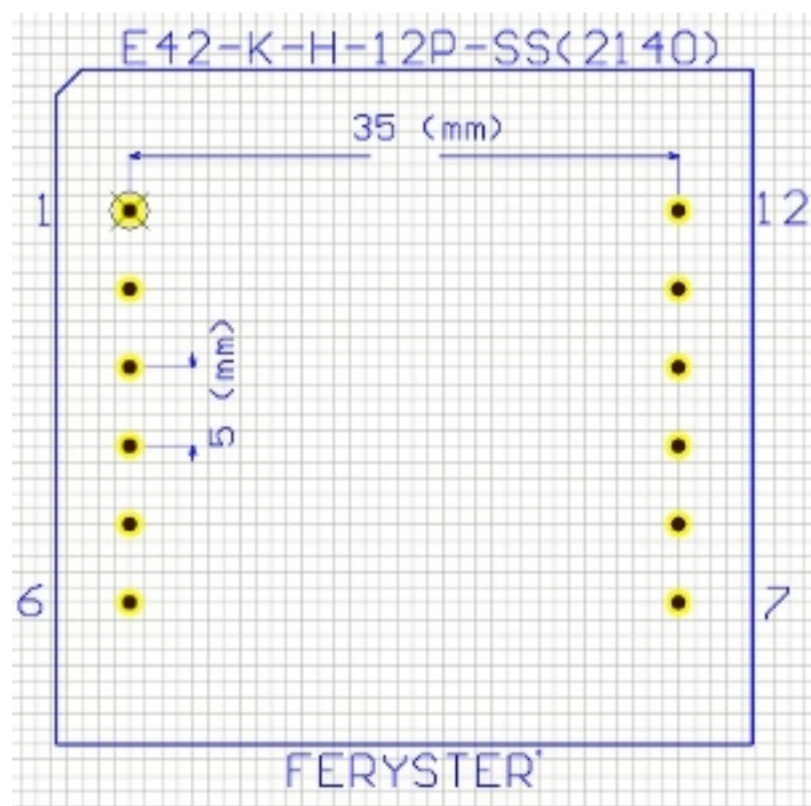


Electr. strength: 4,3kV

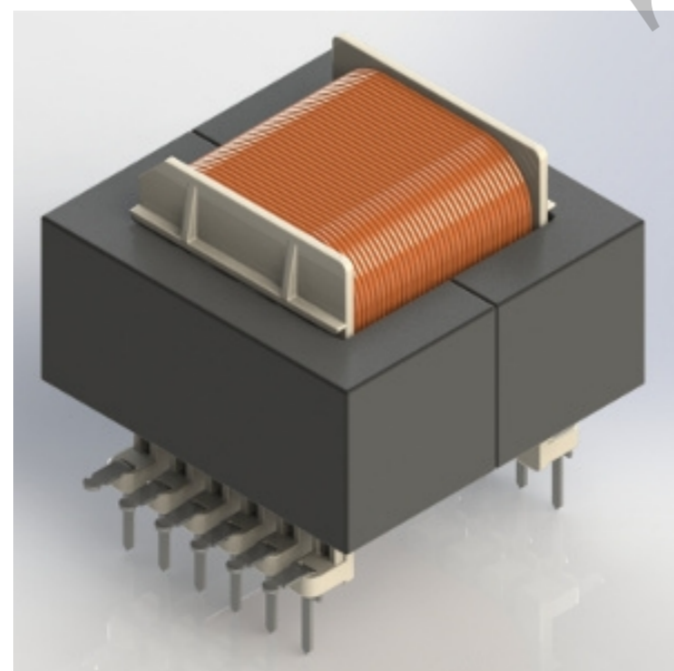
- Primary windings
- Other windings
- Pins connections on PCB
- Shield
- Core
- TIW
- Insulation sleeves
- Pins
- FIW
- Start of the winding
- Cutted pins

[bobbin: E42-K-H-12P-SS\(2140\)](#)

Footprint - Top view



Transformer's model



Transformer's photo

